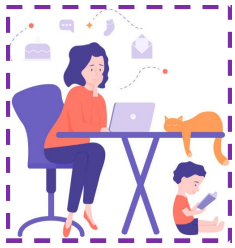


Newsletter April 2020

Optimal Personalised Treatment of early breast cancer using Multi-parameter Analysis



Recruitment update

Total recruitment is currently 2053 (1641 in Optima main and 412 in prelim)

We recruited 40 participants in March;

Velindre Cancer Centre were top recruiters, with 3 randomised—well done to the team!

Please continue to screen and approach potential participants.

Thank you!



OPTIMA is OPEN!

OPTIMA remains open to recruitment at this difficult time. Whilst we understand that the decision to halt research may have been taken out of your hands, if you are able to recruit consider OPTIMA. By entering the trial your patients may be able to avoid chemotherapy.

We are very glad that the trial is open because it's positively helpful to us in the current circumstances

OPTIMA PI

Site Suspensions

We have been informed by a number of sites that they have temporarily suspended recruitment. All are highlighted amber on the recruitment table overleaf.

Please can you check that this is accurate and if you are not currently screening and recruiting patients into OPTIMA but have not been flagged up on the list, please contact the trials office.

Goodbye!

Caroline Jevons is leaving her role as OPTIMA Recruitment Facilitator at the end of the month. Caroline first worked on OPTIMA Prelim back in 2012, returning to work on the main study in 2017.

Caroline will still be involved with the trial though working on site set up on an ad-hoc basis.

She will be greatly missed!!



Patient Interviews

We are continuing to interview patients that decline to join OPTIMA. Check out <http://optimabreaststudy.com/optima-sites/qualitative-recruitment-study.php> for more details.

In a nutshell, please can you:

1. Complete a **QRS Patient Interview Contact Details Form**
2. Register the patient with the Warwick Trials Unit using *QRS Patient Registration Form*
3. Send an email to Nicola.farra@bristol.ac.uk or carmel.conefrey@bristol.ac with your contact number and we will call you for the patient's contact details, please **do not** send them via e-mail.



We will contact the patient, and if they are happy to take part, we will take written consent.

What's it like recruiting to OPTIMA during the Covid -19 pandemic?

Given the pressures of Covid-19, it's notable that so many sites continue to offer OPTIMA to patients. We are keen to hear how you are getting on and to use this knowledge to develop a tips document to support all sites currently recruiting and those that are keen to reopen when the circumstances allow.



I'd like to hear about:

1. Your experiences of recruiting at this time
2. Any challenges you are encountering
3. How you are overcoming them

Please reply with an email to carmel.conefrey@bristol.ac or send me your phone number and I'll give you a call.



We hope you're all keeping safe in this unusual time!

Contact Us

OPTIMA office 02476 151948 optima@warwick.ac.uk QRS 01179 287296 carmel.conefrey@bristol.ac.uk

Number of Patients Randomised per UK Recruiting Site

(correct at end of 21/04/2020)

University Hospitals of North Midlands	63	New Cross Hospital, Wolverhampton	14
Mount Vernon Cancer Centre	52	York Hospital	14
Bristol Haematology and Oncology Centre	48	Royal Cornwall Hospital	13
Addenbrooke's Hospital	47	Royal Free Hospital	13
Blackpool Victoria Hospital	46	Darent Valley Hospital, Dartford	12
University Hospital Coventry	45	George Eliot Hospital	12
Beatson West of Scotland Cancer Centre	43	St Mary's Hospital, Isle of Wight	12
Velindre Cancer Centre	40	Queen Elizabeth Hospital, King's Lynn	12
NHS Lanarkshire	38	Bradford Royal Infirmary	11
Peterborough City Hospital	36	Lister Hospital	10
Royal Albert Edward Infirmary, Wigan	33	Royal Hampshire County Hospital	10
The Christie	33	University College London Hospital	10
Royal Alexandra and Inverclyde Hospitals	29	University Hospital of North Tees	10
University Hospitals of Morecambe Bay	27	Worcestershire Royal Hospital	10
Derriford Hospital, Plymouth	26	Belfast City Hospital	9
Wrexham Maelor Hospital	26	Great Western Hospital, Swindon	9
The Princess Alexandra Hospital NHS Trust	25	Guys Hospital	9
Torbay Hospital	25	Northumbria Healthcare NHS Foundation Trust	9
Salisbury District Hospital	24	Queens Hospital, Burton upon Trent	9
Glan Clwyd Hospital, Bodelwyddan	23	Airedale General Hospital	8
Luton and Dunstable University Hospital	23	Chase Farm Hospital, Enfield	8
Musgrove Park Hospital	23	NHS Ayrshire and Arran	8
Royal Devon and Exeter Hospital	23	Bedford Hospital	7
Weston Park Hospital, Sheffield	22	Prince Charles Hospital, Merthyr Tydfil	7
Queen Elizabeth Hospital, Gateshead	21	Sunderland Royal Hospital	7
Churchill Hospital, Oxford	20	Western General Hospital, Edinburgh	7
Macclesfield District Hospital	20	Whittington Hospital	7
Southampton General Hospital	20	St George's Hospital, Tooting	6
Darlington Memorial Hospital	19	Weston General Hospital, Weston Super Mare	6
Maidstone Hospital	19	Northern Lincolnshire and Goole NHS Foundation Trust	5
North Middlesex Hospital	19	Basildon University Hospital	4
Queen Elizabeth Hospital, Birmingham	19	East Sussex Healthcare NHS Trust	4
Royal Shrewsbury Hospital	19	Dumfries and Galloway Royal Infirmary	4
East Kent Hospitals NHS Foundation Trust	18	Hinchingbrooke Hospital, Huntingdon	4
Frimley Park Hospital	18	Nottingham University Hospital	4
Milton Keynes University Hospital	18	King's Mill Hospital, Sutton-in-Ashfield	4
Russells Hall Hospital, Dudley	18	New Victoria Hospital, Glasgow	4
East Surrey Hospital	17	Pennine Acute Hospitals, North Manchester	4
Forth Valley Royal Hospital	17	Chesterfield Royal Hospital	3
Royal United Hospital, Bath	17	Kidderminster Hospital	3
Barnet Hospital	16	Ulster Hospital	3
Clatterbridge Cancer Centre	16	Ysbyty Gwynedd, Bangor	3
Leighton Hospital	15	Birmingham City Hospital	2
Medway Maritime Hospital	15	Broomfield Hospital	2
Norfolk & Norwich University Hospital	15	Doncaster Royal Infirmary	2
Royal Glamorgan Hospital	15	Queen's Hospital, Romford	2
Royal Gwent Hospital	15	Singleton Hospital, Swansea	2
Stepping Hill Hospital	15	Alexandra Hospital, Redditch	1
Basingstoke and North Hampshire Hospital	14	Royal Derby Hospital	1

Sites who have informed us of a temporary suspension due to COVID-19 are highlighted in amber above.

Please can you check that this is accurate and if you are not currently screening and recruiting patients into OPTIMA but have not been flagged up on the list, or if there are any other errors, please contact the trials office.

Contact Us

OPTIMA office 02476 151948 optima@warwick.ac.uk QRS 01179 287296 carmel.conefrey@bristol.ac.uk